



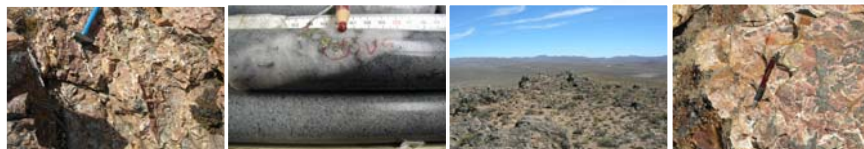
## An Aggressive Project Generator in the Americas

Metallum is a technically focused company that opportunistically acquires high potential mining projects.

Metallum has a track record of creating shareholder value – in 2009, for example, Metallum realized more than **\$5 million dollars** from the sale of its Chester project in northern Ontario.

Metallum's current flagship project is the 'M-18' **gold property** located in Argentina's famous gold mining Patagonia region.

Metallum has a strong treasury of \$5 million. The funds will be used to develop the M-18 Project and to search for other advanced projects.



### CAPITAL STRUCTURE

### TSX-V: MRV

Last trade March 1, 2011	\$0.17
Shares Outstanding	53,803,828
Fully Diluted	58,078,828
Cash	\$5 million
Debt	None
4 month high/low (since halt lifted)	\$0.22 / \$0.16

- A technically distinguished management team and board composed of current mining CEOs
- \$5 million in cash
- Actively pursuing new projects
- Company's current market cap of \$9.2 million, with \$ 5 million cash

# THE PROPERTIES

## MANAGEMENT

*Greg Lipton, P.Geo, President, CEO, and Director of Metallum Resources Inc.*

Over 30 years experience in international exploration with major mining companies for base metal and precious metal deposits.

*Kevin Bullock, P.Eng, Director, Non-executive chairman*

President and CEO of Volta Resources Ltd. Mining engineer with over 20 years experience in North America and offshore mine development and operations.

*Carl B. Hansen, Director*

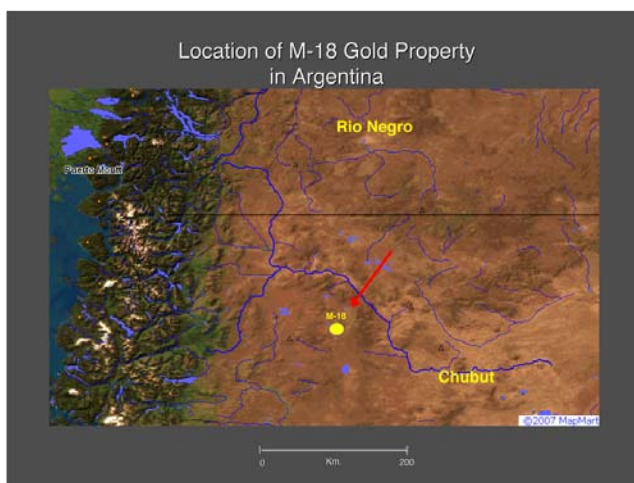
Carl B.Hansen. President and CEO of Atacama Pacific Corporation. Geologist with nearly 20 years of international experience in the exploration and mining industry with both junior exploration and senior mining companies including Andina Minerals, INCO, TVX Gold, and Kinross.

*Donald Rowsell, Director*

Over 25 years experience as stockbroker and partner in two Toronto securities firms, consultant to a Canadian bank and now retired. Former President and CEO of Young-Shannon.

## M-18 Project, Patagonia, Argentina

- 63 sq. km. land package
- Gold assay results from 98 grab samples from systematic mapping returned values ranging up to 4.63 grams/tonne gold and 47.20 grams/tonne silver
- Minimum exploration budget plan of \$1 million starting early 2011
- Gold zone is exposed on surface for an approximate length of 1.2 km. and width of 0.5 km
- System remains open in all directions
- Property has never been drilled
- Known gold zone is fraction of property - vast exploration opportunity
- Aggressive exploration program planned for 2011 starting on the known gold zone, ultimately expanding into the surrounding terrain where extensive rock alteration is known to exist.



## CONTACT US

Greg Lipton, President & CEO

Metallum Resources Inc. 67 Yonge St., Suite 602, Toronto, Ontario, Canada, M5E 1J8

Phone: (416) 861-8351 • [greg.lipton@metallumresourcesinc.com](mailto:greg.lipton@metallumresourcesinc.com) • [www.metallumresourcesinc.com](http://www.metallumresourcesinc.com)